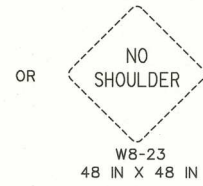
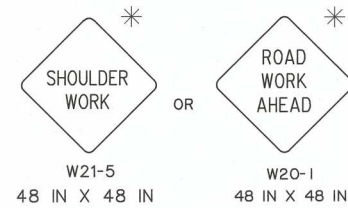
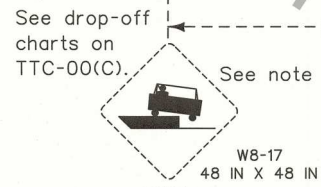
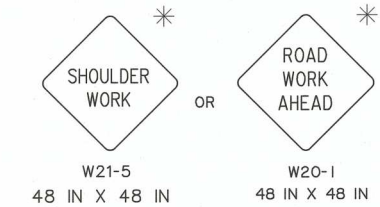
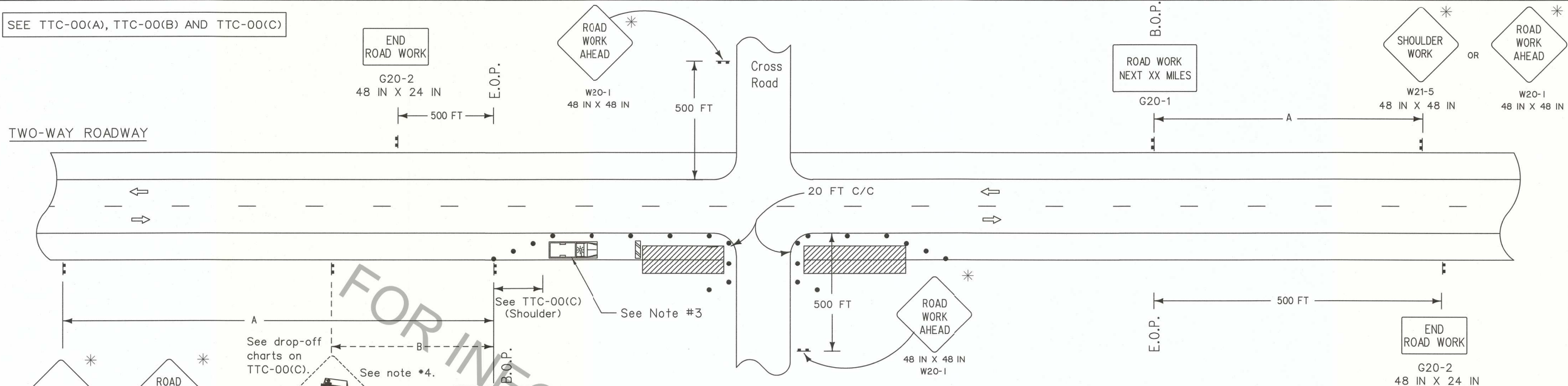


SEE TTC-00(A), TTC-00(B) AND TTC-00(C)

TWO-WAY ROADWAY



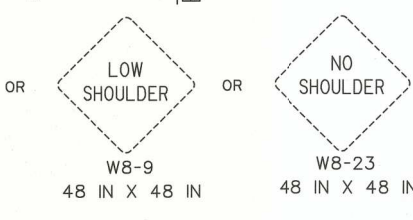
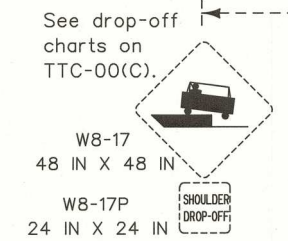
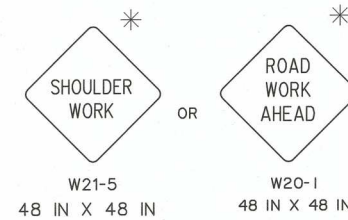
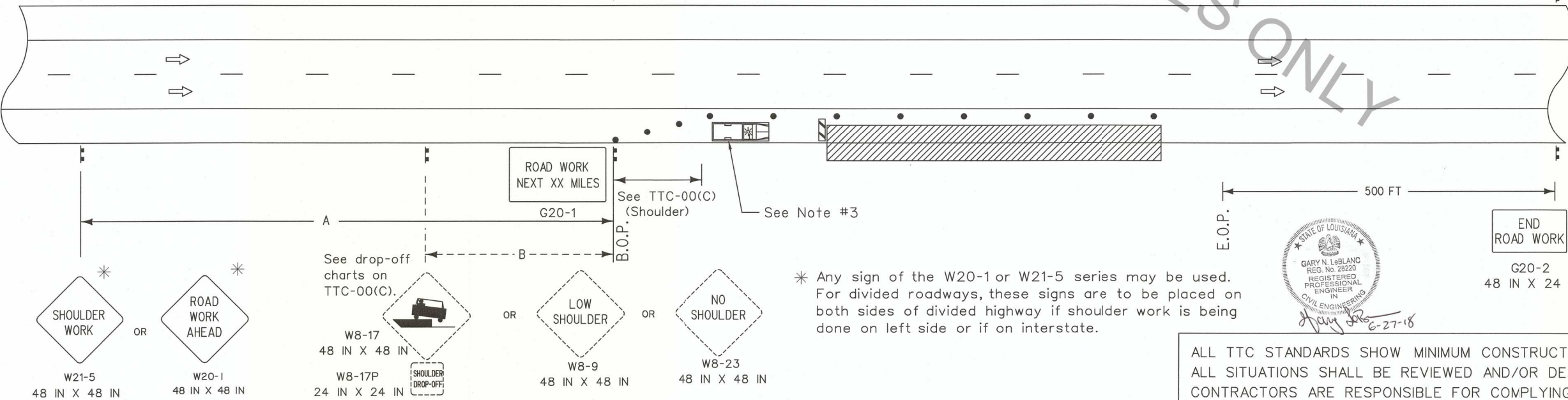
SPEED LIMIT (prior to construction)	SPACING	
	'A'	'B'
≤ 40 mph	500 FT	250 FT
45-50 mph	1000 FT	350 FT
≥ 55 mph	1500 FT	500 FT
Expressway/Interstate	2500 FT	1000 FT

- See TTC-00(C) for minimum taper length and maximum device spacing for shoulder closure tapers.
- If horizontal curve radius is less than 300 feet, device spacing shall be 25 feet.



NOTES

- This sheet shall be used with the Temporary Traffic Control General Notes Sheets TTC-00(A), TTC-00(B), TTC-00(C)
- This layout represents the minimum traffic controls required for workers and equipment operating less than 15 feet from the traveled way for more than one hour. Less than one hour, see figure TA-4 of the MUTCD.
 - No signs or barricades are required for equipment operating or work in progress greater than 15 feet from the traveled way. (See TTC-01).
 - Work or equipment confined to a spot location (less than 200 feet) shall be marked by channelizing devices spaced at 25 feet or by a vehicle with an amber light visible to traffic. Work extending more than 200 feet of roadway length shall be marked with appropriate devices spaced as noted on TTC-00(C).
 - Applicable drop-off sign options are defined on TTC-00(C).
 - The distance on the "Road Work Next XX Miles" sign shall be stated to the nearest whole mile. This sign shall be placed at the Beginning of Project (B.O.P.) limits. This sign may be omitted if work zone is less than 0.5 miles.
 - A vehicle with a flashing amber light and a truck mounted attenuator shall be used on all roadways with an ADT greater than 20,000 and a pre-construction speed greater than or equal to 40 mph. This vehicle shall move with work operations not to exceed the roll-ahead distance required by the manufacturer plus 100 feet.



LEGEND

- Traffic Sign
- Channelizing Devices
- Type III Barricades
- Work Area
- Direction of Travel
- Truck with Amber Light



ALL TTC STANDARDS SHOW MINIMUM CONSTRUCTION SIGNING.
ALL SITUATIONS SHALL BE REVIEWED AND/OR DESIGNED BY THE ENGINEER.
CONTRACTORS ARE RESPONSIBLE FOR COMPLYING WITH ALL TTC STANDARDS.

SHEET NUMBER	PARISH	CONTROL SECTION	STATE PROJECT
DESIGNED G. LEBLANC	CHECKED J. COUVIN	DETAILED C. FAKOURI	CHECKED G. LEBLANC
NO.	DATE	REVISION OR CHANGE ORDER DESCRIPTION	BY
			DATE: 7/2/18
TEMPORARY TRAFFIC CONTROL LAYOUT FOR WORK LESS THAN 15 FEET FROM THE TRAVELED WAY			
TTC-02			